
FP-3020X-TS

Flat-Panel Display for Honeywell Ergonomic Furniture

*A low-maintenance, long-life upgrade
for your Z stations*

A high quality replacement display

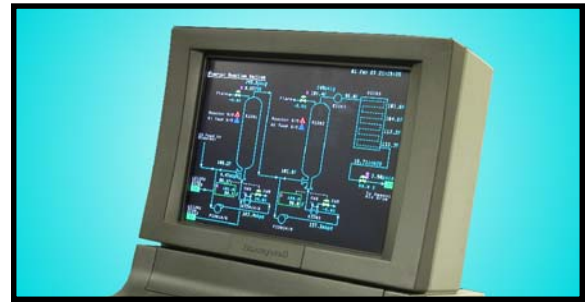
This LCD flat-panel display was designed as a direct replacement for the CRT-based monitors used in Honeywell's ergonomic furniture using EPDG, EPDG2, TPDG, TPDGX or GUS video. The display is installed without modifications to the furniture for a fast and simple monitor replacement. Connect the power cable, video cable, touch screen cable, and brightness/contrast cable to matching connectors on the FP-3020Xts.

Integrated flat touch screen

The FP-3020Xts comes with a flat infrared touch screen mounted to the front of the display. This touch screen is mounted a few millimeters from the display surface, and eliminates "false picks" sometimes seen with the old touch screen because of its distance from the screen.

Bright image, durable screen

The delicate LCD plastic surface is protected by a layer of anti-glare glass attached to the front of the display. This durable surface protects the LCD from the wear scratches that any plastic surface eventually suffers after repeated cleaning (or touching with fingers, pencils, or sharp objects). The anti-glare treatment of the glass, combined with the inherent low-glare characteristics of a flat display, results in a high-contrast display that is easy on the eyes.



Low maintenance

The solid-state design of the flat-panel TFT LCD display provides inherent reliability, low power consumption, and low maintenance. This LCD technology is expected to last twice as long as CRT-based monitors. Setup adjustments are accomplished using a push-button array mounted behind the "Honeywell" door at the bottom of the monitor. Once initial adjustments have been made, the on-screen control feature may be disconnected, preventing unauthorized adjustments to the display.

Specifications

Viewable Area: 20.1" diagonal (16" x 12")

Viewing Angle: 170° horizontal, 170° vertical

Dimensions: 19.3"W x 14.9"H x 2.3"D

Display modes supported: VGA 640x480 through UXGA 1600x1200, includes EPDG and TPDG scan frequency. 9-pin connector, 15-pin adapter included.

Brightness: 300 cd/m² typical, 240 cd/m² min

Operating Environment: Temperature 0-45°C, Relative Humidity < 85%

Weight: 25 lb

Order info

FP-3020X-TS (with touch screen)

FP-3020X (without touch screen)



WESTERN PROCESS COMPUTERS, INC.
2033 W. NORTH LANE, SUITE 14
PHOENIX, AZ 85021

Phone: 602-997-7245
Fax: 602-997-7248
info@westernprocess.com
www.westernprocess.com